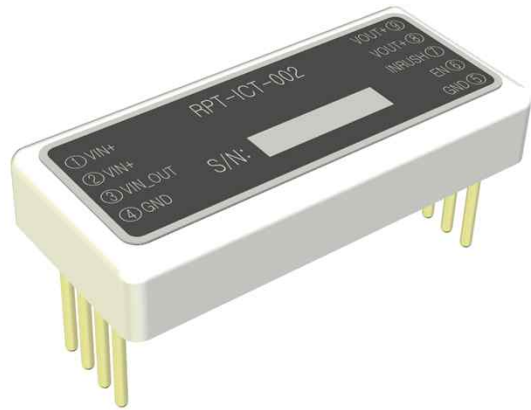


Reverse Protection & ON/OFF Module, RPT-ICT-002

PRODUCT FEATURES

- Wide input range 5~60VDC
- Protections : Reverse voltage
Option : Short circuit / Overload
- Self heat dissipation
- Five-sided shield metal case
- 100% burn-in test
- High reliability
- 2 years warranty



INPUT CHARACTERISTICS

INPUT VOLTAGE RANGE	5 ~ 60VDC
REVERSE VOLTAGE	-60V Max
REVERSE CURRENT	10mA Max.
SUPPLY CURRENT@Vin=30V	1.0mA Max. @EN=L 2.5mA Max. @EN=H

OUTPUT CHARACTERISTICS

OUTPUT CURRENT	Continue : 25A
CURRENT LIMIT	Option
LINE DROP VOLTAGE@25A-load	100mV Max.
REVERSE LEAKAGE CURRENT@-50V input	1mA Max.

GENERAL CHARACTERISTICS

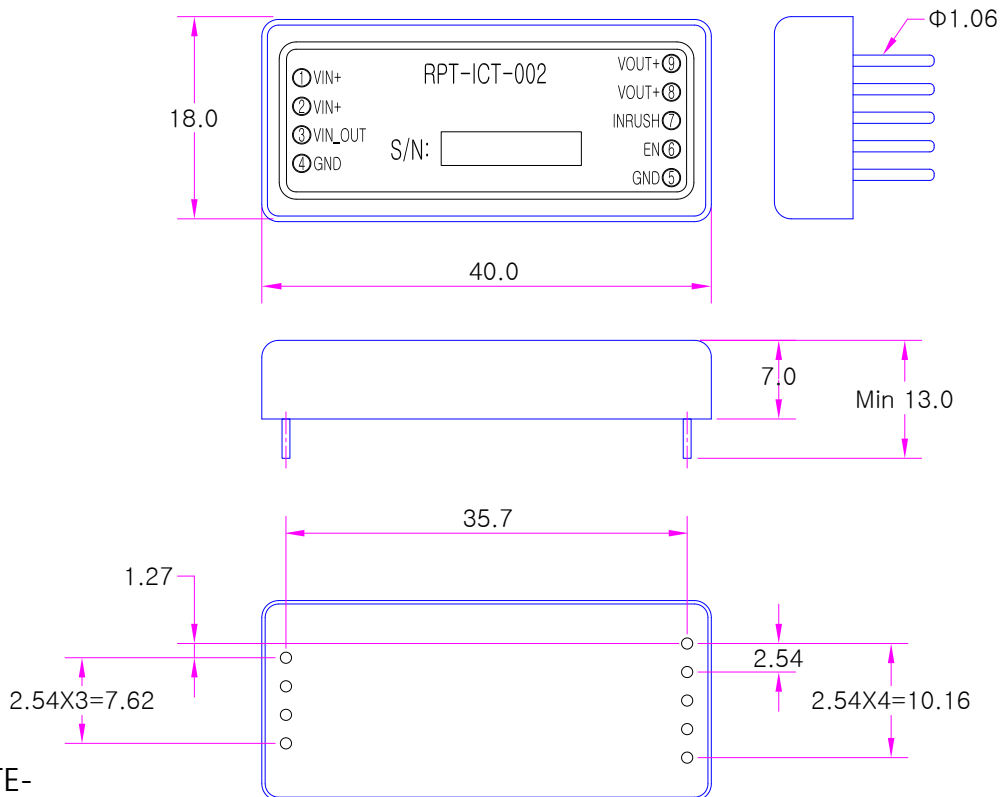
ENABLE VOLTAGE	2.1V Min.
DISABLE VOLTAGE	0.4V Max.
INRUSH CURRENT CONTROL	Add 0~6.8nF From INRUSH Pin to GND
FAULT DELAY TIME	30mS Approximately

Reverse Protection & ON/OFF Module, RPT-ICT-002

GENERAL CHARACTERISTICS

OPERATING TEMPERATURE	-40 ~ +85°C
STORAGE TEMPERATURE	-65 ~ +105°C
HUMIDITY	90%
WEIGHT	16 g Max.
SIZE	40.0(L) X 18.0(W) X 7.0(H)mm

MECHANICAL DIMENSIONS



-NOTE-
Unit : mm
Tolerances : -0.2mm, +0.5mm